



XXIX International Congress of Psychology

July 20 – 25, 2008

Berlin – Germany



European Psychology Publication Issues

Spanish Psychology journals: Demography, editorial tendencies and impact

**Evaristo Jiménez Contreras, Emilio Delgado López-Cózar,
Rafael Ruiz Pérez, Mercedes de la Moneda Corrochano,
Facultad de Comunicación y Documentación
Universidad de Granada**

Sources and Methodology

- **DICE: Difusión y Calidad Editorial de las Revistas Españolas de Humanidades y Ciencias Sociales y Jurídicas**



Difusión y Calidad Editorial de las Revistas Españolas de Humanidades y Ciencias Sociales y Jurídicas



- [Inicio](#) [Cómo buscar](#) [Búsqueda](#) [Metodología](#) [Grupo de trabajo](#) [Contacto](#) [Enlaces](#) [Mapa](#)

Búsqueda por campos

Título de revista

Área Temática

Área de conocimiento

ISSN

Base de datos

Evaluadores externos

Cumplimiento periodicidad

Apertura exterior del consejo de redacción

Apertura exterior de los autores

Catálogo Latindex

cualquier área temática

cualquier área de conocimiento

Ejemplo: 0210-0614

cualquier base de datos

Sí No

Sí No

Sí No

Sí No

Sí No

Buscar

Limpiar

Listado Alfabético de Revistas

[A](#) [B](#) [C](#) [D](#) [E](#) [F](#) [G](#) [H](#) [I](#) [J](#) [K](#) [L](#) [M](#) [N](#) [Ñ](#) [O](#) [P](#) [Q](#) [R](#) [S](#) [T](#) [U](#) [V](#) [W](#) [X](#) [Y](#) [Z](#)

Listado Alfabético de Bases de Datos

[A](#) [B](#) [C](#) [D](#) [E](#) [F](#) [G](#) [H](#) [I](#) [J](#) [K](#) [L](#) [M](#) [N](#) [Ñ](#) [O](#) [P](#) [Q](#) [R](#) [S](#) [T](#) [U](#) [V](#) [W](#) [X](#) [Y](#) [Z](#)

Sources and Methodology

- IN-RECS: Índice de impacto de las revistas españolas de Ciencias Sociales.

The screenshot shows the IN-RECS website interface. At the top left is the IN-RECS logo. To the right, it says 'ÍNDICE DE IMPACTO REVISTAS ESPAÑOLAS DE CIENCIAS SOCIALES'. Below this is a navigation bar with 'Ayuda', 'Estadísticas', 'Revistas fuente', and 'Ayuda'. The main content area is titled 'ÍNDICE DE IMPACTO REVISTAS ESPAÑOLAS DE CIENCIAS SOCIALES PSICOLOGÍA'. It features a search bar and several filter options: 'Revistas', 'Artículos', 'Autores', and 'Instituciones'. There are also buttons for 'Impacto por años' (2006-1996) and 'Impacto acumulativo' (1994-2006, 2002-2006). A 'BUSQUEDAS' button is on the right. Below the navigation bar, it says 'ÍNDICE DE IMPACTO: 2006' and 'Población de revistas: 93'. There is a dropdown menu for 'Ordenación por:' set to 'Índice impacto' and another 'Ayuda' button.

CUARTIL	POSICIÓN	TÍTULO DE LA REVISTA	ÍNDICE IMPACTO 2006	TOTAL TRABAJOS	TOTAL CITAS	CITAS NACIONALES	CITAS INTERNACIONALES
1º	1	International Journal of Clinical and Health Psychology	2.722	54	147	129	18
	2	Ansiedad y Estrés	1.431	44	63	63	0
	3	Psicothema	1.195	210	251	224	27
	4	Revista de Psicopatología y Psicología Clínica	0.931	29	27	24	3
	5	International Journal of Psychology and Psychological Therapy	0.750	52	39	27	12
	6	Papeles del Psicólogo: Revista del Colegio Oficial de Psicólogos	0.552	38	21	21	0
	7	Clínica y Salud	0.548	31	17	17	0
	8	Revista de Psicología del Trabajo y de las Organizaciones	0.461	26	12	12	0
	9	Boletín de Psicología	0.392	28	11	10	1
	10	The Spanish Journal of Psychology	0.390	41	16	4	12
	11	Revista de Psicología del Deporte	0.370	27	10	9	1
2º	12	Revista de Logopedia, Foniatría y Audiología	0.290	31	9	9	0
	13	Psicológica	0.243	37	9	4	5
	14	Adicciones. Revista de Sociodrogalcohol	0.223	94	21	14	7
	15	Infancia y Aprendizaje	0.215	51	11	10	1
	16	Análisis y Modificación de Conducta	0.212	66	14	11	3
	17	Estudios de Psicología	0.205	39	8	6	2
	18	Revista de Historia de la Psicología	0.196	66	13	13	0
	19	Revista de Psicología General y Aplicada	0.193	62	12	11	1
	20	Revista de Psicología Social	0.189	37	7	7	0
	21	Anales de Psicología	0.176	51	9	8	1
3º	22	Anuario de Psicología	0.175	40**	7	7	0
	23	Revista de Atención Temprana	0.166	18	3	3	0
	24	Trastornos Adictivos	0.157	38	6	4	2
	25	Cognitiva	0.156	32	5	1	4

Issues analyzed

- 1. Number of journals and papers in Psychology and national and international trends in the last ten years**
- 2. Languages employed in these journals**
- 3. Institutional and geographic origin**
- 4. Accessing ways: pay, time embargo on open access, OA**
- 5. How many use/practice peer reviewing**
- 6. Journals reputation**
- 7. National and international impact of Spanish Psychology Journals**
- 8. Prices**

Number of journals and papers in Psychology and national and international trends in the last years in Spain

Profile:

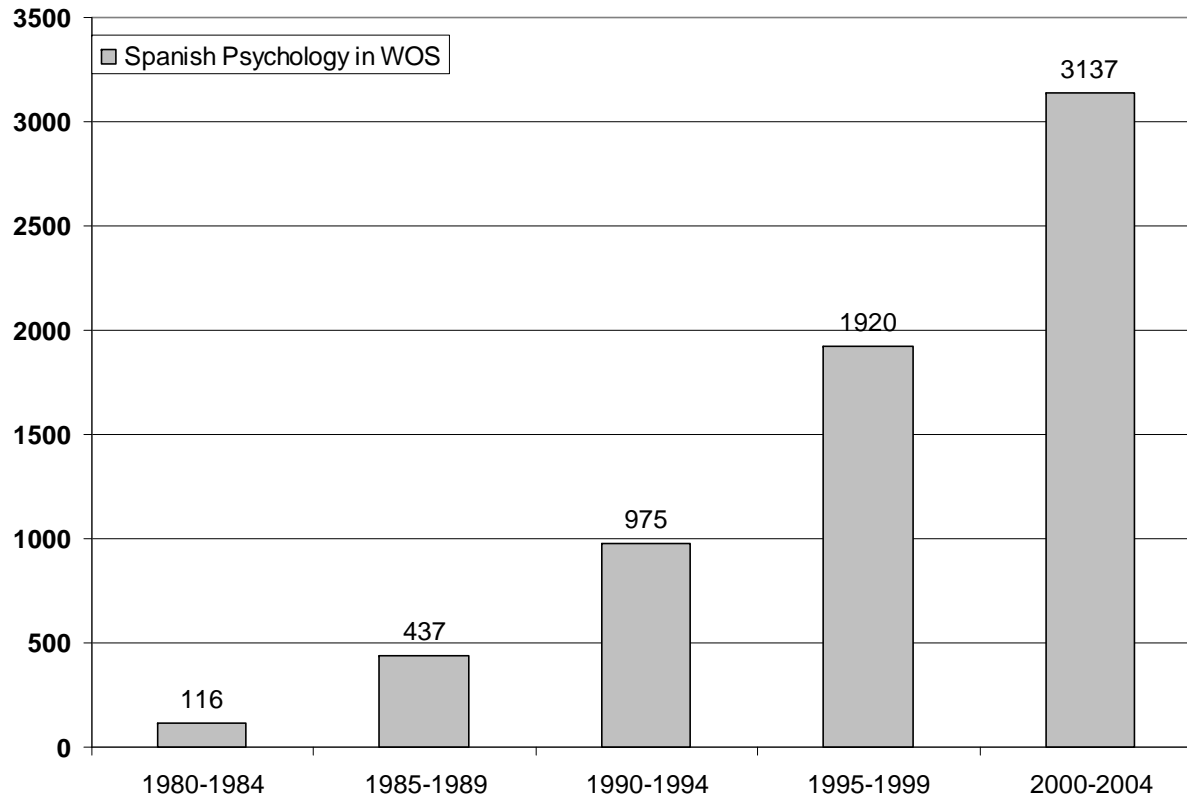
Young journal, only 6 prior to 1970

Half of population are later of 1990

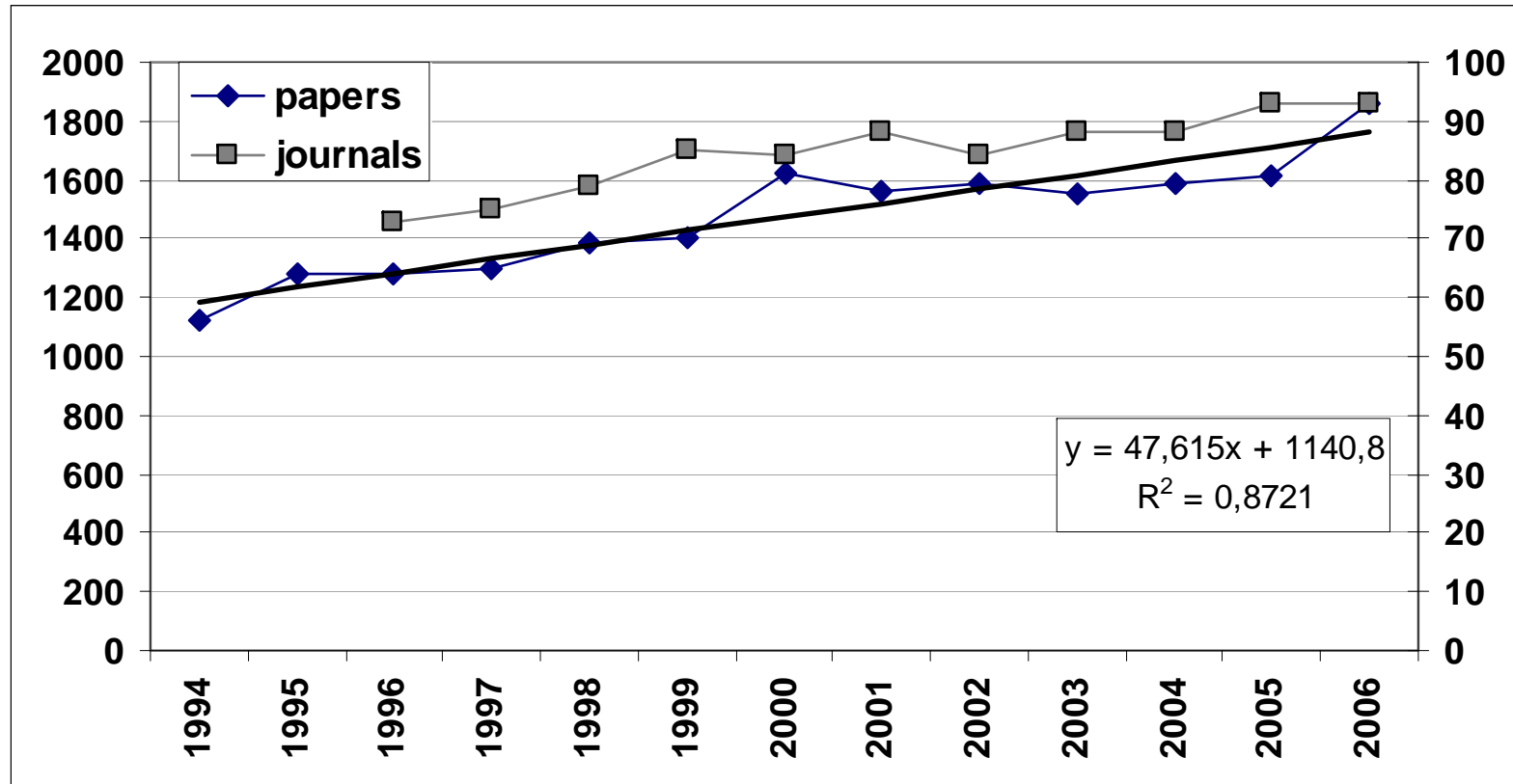
Change of rithm during eighties

A new change after 2000?

Spanish Psychology increase in WOS since eighties



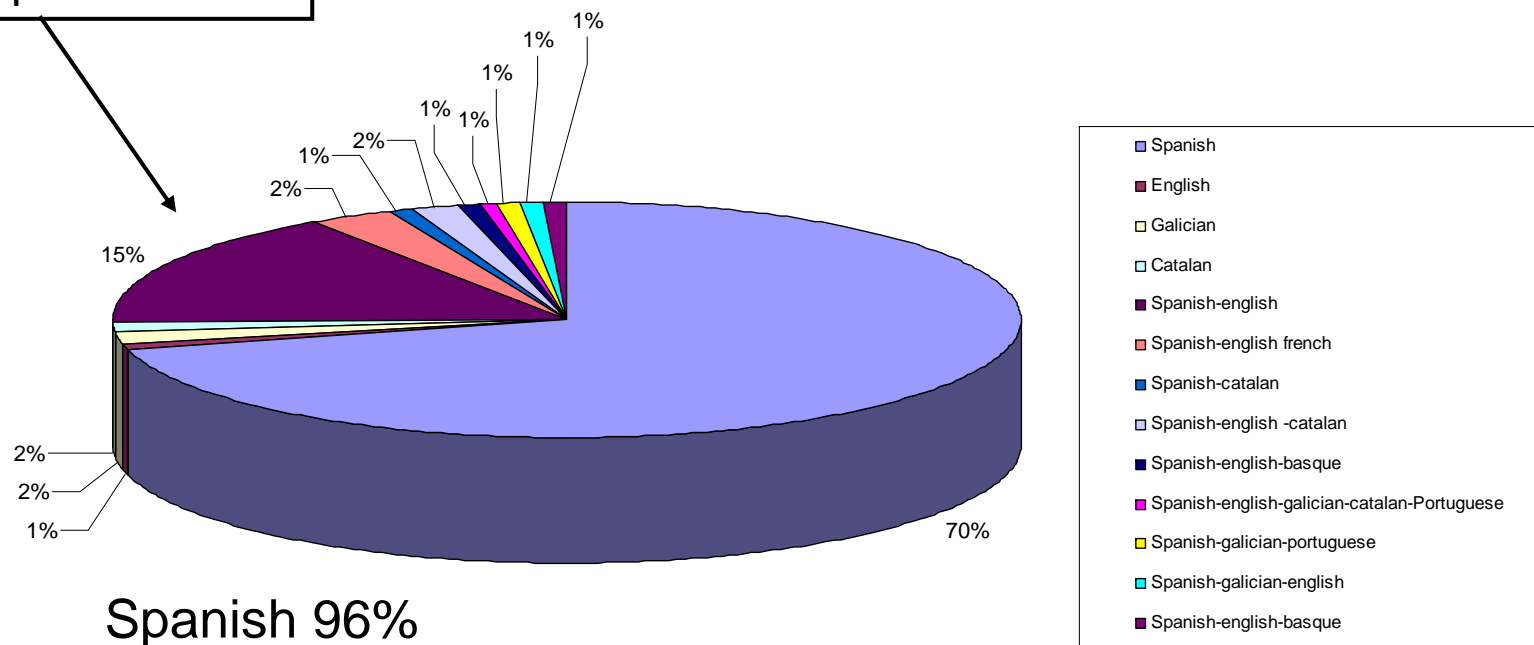
Journals and papers evolution since 1994 to 2006 in Spanish Database



This increase of national production has occurred despite of international growing and national policy against spanish journals

Languages employed in spanish journals

English-spanish accepted



Spanish 96%

English 24%

International WOS papers: languages

Years	English	Spanish	Italian	Portuguese	French	German		Rate
1996	266	84			11		361	0,32
1997	194	91					285	0,47
1998	184	91				5	280	0,49
1999	299	99				1	399	0,33
2000	273	237				2	512	0,87
2001	453	120			1		574	0,26
2002	283	141			1		425	0,50
2003	390	112				1	503	0,29
2004	331	102					433	0,31
2005	514	128			1		643	0,25
2006	608	197	1	1			807	0,32
2007	631	150			2	1	784	0,24
	4426	1552	1	1	16	10	6006	0,35

Spanish journals in WOS until 2004: 1

Spanish journals in WOS since 2007: 6

Publisher Type

University	36
Scientific societies	7
Professional societies of Psychologist	12
Asociations and foundations	25
Institutes	12
Publishers	13
Others	15

A lot of public, academic publishers
Few publisher companies

Geographic origin

Madrid	40
Valencia	11
Barcelona	10
Sevilla	5
Palma de Mallorca	4
Almería	4
Oviedo	3
Bilbao	3
Coruña	3
Granada	3
Murcia	2
Salamanca	2
Santiago de Comp.	2
Alicante	2
Castellón	2
Others places with 1	17

 **55%**

It's remarkable the position of Valencia due to its long tradition in psychological studies at the university

How many use/practice peer reviewing

Use external reviewers		%
Yes	36	25,90%
No	90	64,70%
Without data	13	9,30%
Totals	139	100,00%

- If we use this definition:

“uses external experts to the editorial team, chosen *ad hoc* for each article, to dictate and assess originality, novelty, relevance and methodological quality of all manuscripts they receive ”

- Many journals review originals through permanent members of their management teams, that is to say a “soft” version of the practice, but some of those who follow that practice do not clearly state so and how many there are is very difficult to determine.

National and international impact of Spanish Psychology Journals

Source journals (12)	26
Journals with calculated impact index	123
Citable source articles for period 1994-2006	10069
Total of citations loaded onto databases	16253
Total of national citations	13697
Total of international citations	2556
Total of citations from source journals loaded onto databases for 1994-2006 period	11938
2006	0.65
1994-2006	1.19
1994-2006	2.4
Percentage of cited articles	44.1%
Number of self-citations for period 1994-2006	5396
Number of self-citations for period 1994-2006	3848

- Source data: INRECS, main figures

Citation trends

Journals which receive some citations:

18% in 1996

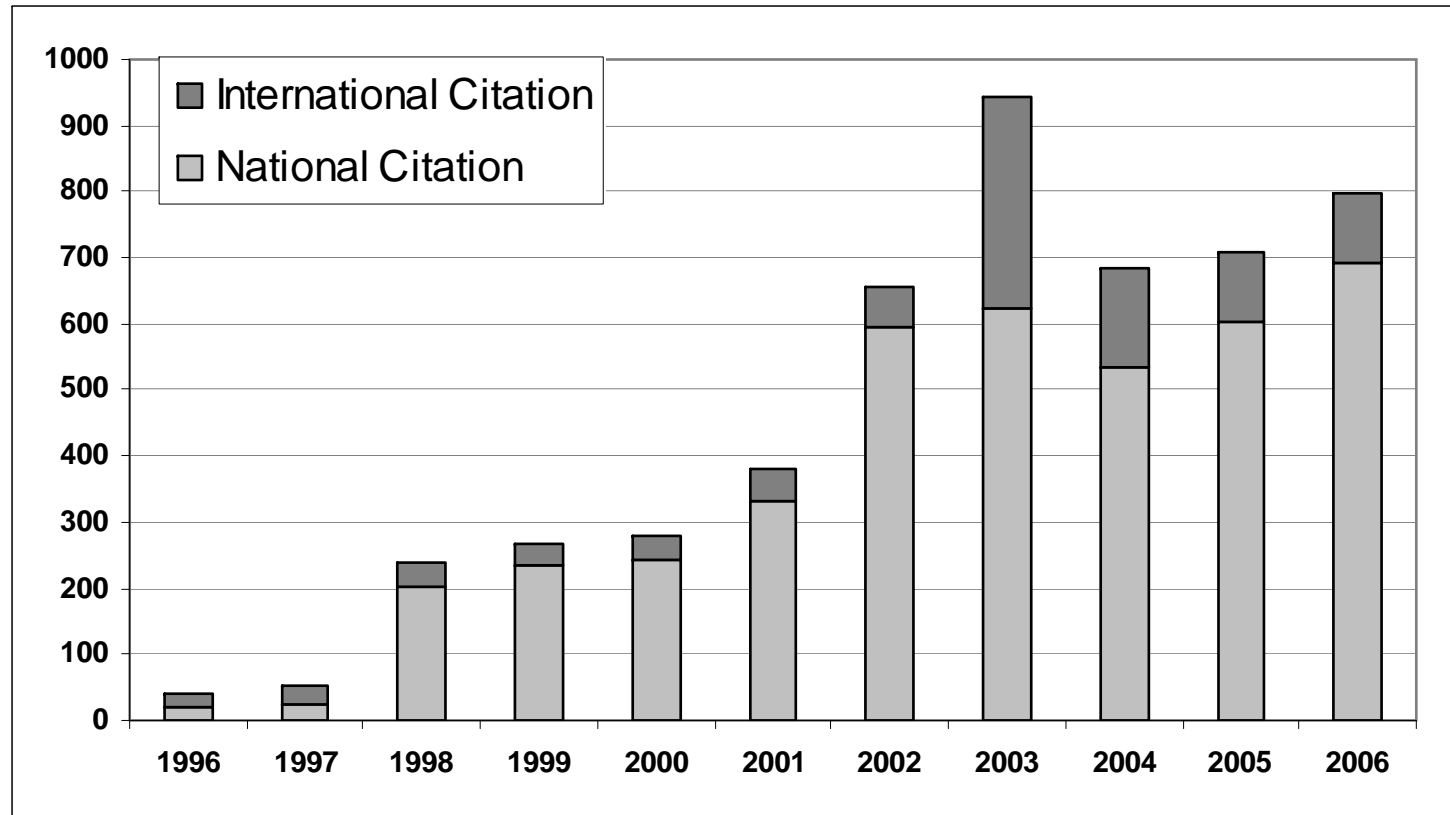
47% in 2006

Journals with IF higher than 1

0 in 1996

3 in 2006

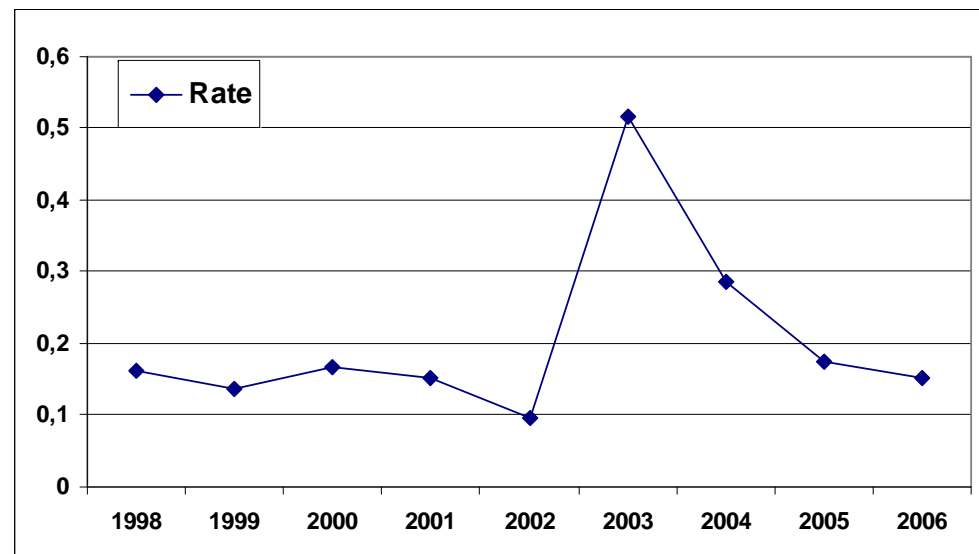
Citation trends



- **Time evolution**
 - 2 year window
 - 45% increase in production
 - 2000% increase in citation

Ratio National/International

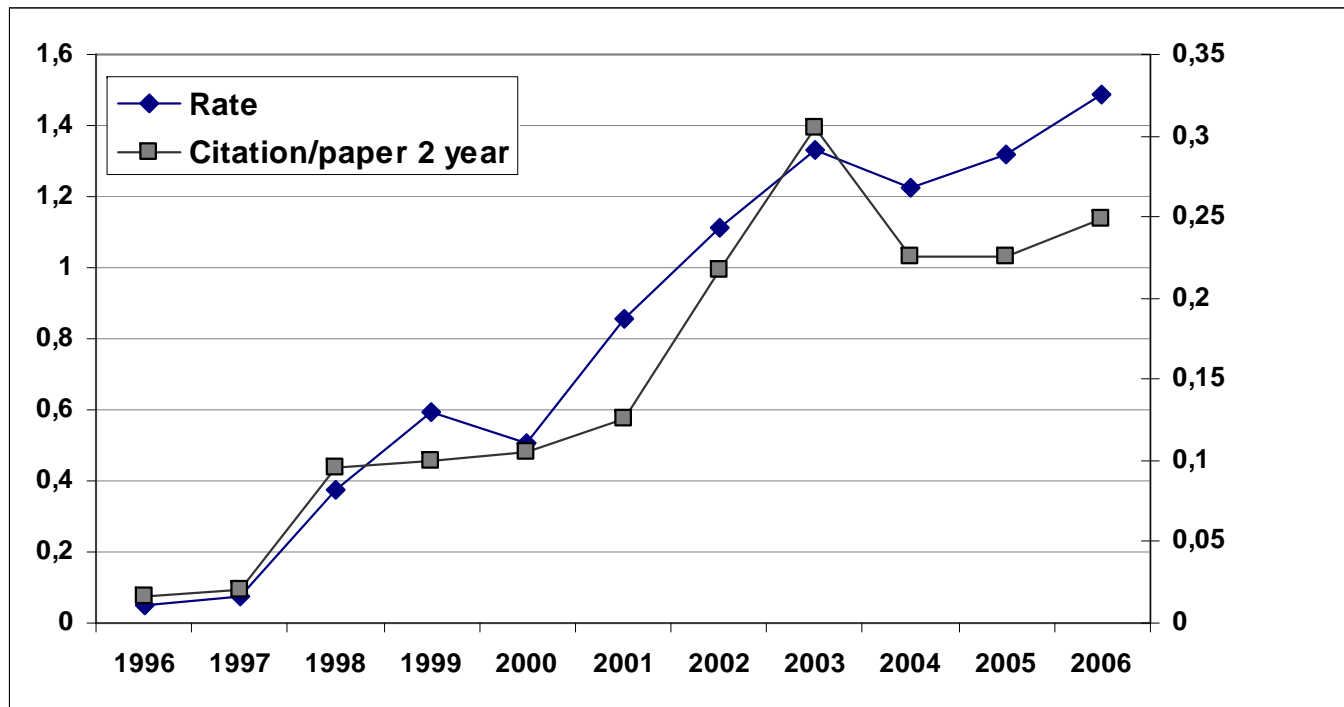
- 0,204 ±0,127
representative



Especialidades	National Cit.	International cit.	Ratio
Anthropology	351	316	0,90
Lib & Inf Sci	1393	350	0,25
Psichology	13697	2556	0,19
Sociology	3815	407	0,11
Geography	3048	289	0,09
Economics	16780	1302	0,08
Urbanism	913	49	0,05
Communication	446	20	0,04
Education	10232	371	0,04
Political Sci	2911	75	0,03

Citation per paper

- **Global increase of citation per paper and 2 year window**



Citation rate goes from 0.05 to 1,5

Citation/paper (2 year window) increase 14 times

But...

Some (others) facts about spanish citations

- 70% of citations received by spanish papers comes from spanish researchers
- 40 % come from spanish WOS journals
- More than 70% of citations received from spanish journal in WOS World comes from other spanish journals

Journal reputation

- **100 journals analyzed, five categories: Evolutive Psy & Education, Social Psy, Behaviour Methodology, Personality & Psy treatment and Psychobiol**
- **No more than six are considered good or very good by more than 50% of professors**
 - **Psicothema**
 - **Infancia y Aprendizaje**
 - **Revista de Psicología Social**
 - **Revista de Psicología Social Aplicada**
 - **Análisis y Modificación de la Conducta**
 - **Metodología de las Ciencias del Comportamiento**
 - **Revista de Psicología General y Aplicada.**

Alcaín 2002: own elaboration